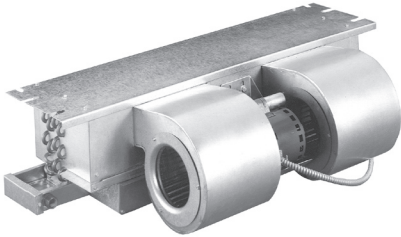


MEETS 2006  
DOE REQUIREMENTS <sup>(1)</sup>



## HX(-C) Series

Horizontal Recessed  
Ceiling Fan Coil  
1-1/2 - 3 Tons Cooling  
0 - 10 kW Electric Heat



**HX Fan Coil**



**Optional Access Panel**  
(non-louvered shown)  
(see P.3 for information)

The space-saving **HX** Series fan coil is only 10" high (11" with enclosure), allowing it to recess in a ceiling. Recessed ceiling fan coils save valuable floor space and eliminate costly "equipment" closets.

The **HX** series is compatible with most split-system

condensing units and heat pumps (**heat pumps with electric heat require field added kit - see P. 2).**

**(1) First Co's customer is ultimately responsible for confirming which fan coil models are compatible with selected outdoor unit(s) and which expansion valves (if any) are required. To determine approved indoor/outdoor matches, go to [www.firstco.com](http://www.firstco.com) or contact the factory.**

All **HX** fan coils include a 240/24V transformer and are completely prewired with 0 to 10 kW of electric heat. A sloped drain pan allows positive drainage of condensate.

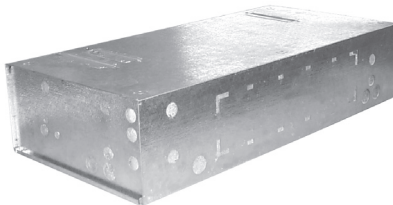
For **HX** fan coils factory installed within an enclosure, add "-C" after the kW in the model number. For instance, ordering model **18HX5-C** will include an **18HX5** factory installed in a # **9EHX01** enclosure and your choice of either a # **965** or **965-1** panel (see "Enclosures with Ceiling Panels" on P. 3).

### Standard Features:

- Drain pan has 3/4" NPT primary and secondary (overflow) fittings
- 240V motor, 24V controls
- Highly efficient copper tube/aluminum fin heating and cooling coils. Cooling coil has a piston-type metering device or factory or field installed R22 or R410A TXV's. Contact factory for correct match with outdoor unit.
- Insulated and coated galvanized steel drain pan is sloped for proper drainage.

### Optional Features:

- Attractive off-white return air / access panel with captive screws (panels can be field painted)
- Fully insulated enclosure with matching ceiling panel (enclosure can be pre-installed). Also allows for ducted return air.
- Heat pump kit - for all HX models with electric heat (#**942-1**) (field installed)
- Factory or field installed TXV's (R22 or R410A)
- Condensate overflow switch (# **SS3**) (Field installed)
- Enclosure (Cap" kit - for above the ceiling installation (P.4)



**Optional Insulated Enclosure**  
(see P.3 for information)



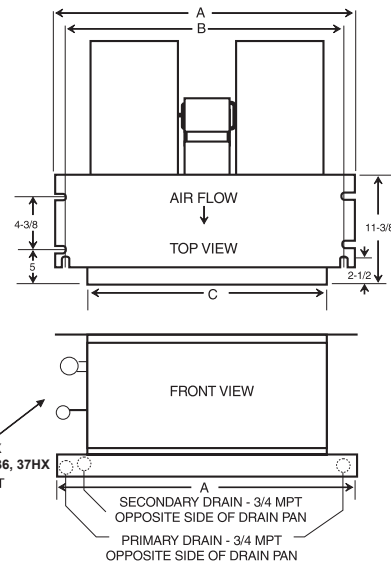
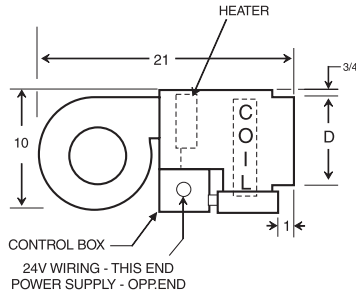
**Matching Access Panel for Enclosure**  
(non-louvered shown)  
(see P.3 for information)

# HX(-C) Series

## 1-1/2 through 3 tons



Approved for installation with 0" clearance to combustible materials



(See P. 4 for Model Numbers)

PERFORMANCE DATA										
UNIT MODEL	NOM. CFM	NOM. COOL BTUH	HEAT		TOTAL AMPS	MIN. CIR. AMPACITY		(2) MAX FUSE		
			kW	BTUH		208V	240V	208V	240V	
										208V
18HX	600	18,000	---	---	2.0	3	3	15	15	
			-3	3	10,200	14.5	16	20	20	20
			-5	5	17,000	22.8	25	30	25	30
			-6	6	20,500	27.0	30	35	30	35
			-8	8	27,300	35.3	39	47	40	50
			-10	10	34,100	43.6	48	55	50	60
19HX	600	19,000	---	---	1.0	2	2	15	15	
			-3	3	10,200	13.5	15	18	15	20
			-5	5	17,000	21.8	24	30	25	30
			-6	6	20,500	26.0	29	35	30	35
			-8	8	27,300	34.3	38	47	40	50
			-10	10	34,100	42.6	47	55	50	60
24HX & 25HX	800	24,000	---	---	2.0	3	3	15	15	
			-3	3	10,200	14.5	16	20	20	20
			-5	5	17,000	22.8	25	30	25	30
			-6	6	20,500	27.0	29	35	30	35
			-8	8	27,300	35.3	39	47	40	50
			-10	10	34,100	43.6	48	55	50	60
30HX & 31HX	1000	30,000	---	---	2.0	3	3	15	15	
			-3	3	10,200	14.5	16	20	20	20
			-5	5	17,000	22.8	25	30	25	30
			-6	6	20,500	27.0	29	35	30	35
			-8	8	27,300	35.3	39	47	40	50
			-10	10	34,100	43.6	48	55	50	60
36HX & 37HX	1200	36,000	---	---	2.8	4	4	15	15	
			-3	3	10,200	15.3	18	20	20	20
			-5	5	17,000	23.6	27	30	30	30
			-6	6	20,500	27.8	31	35	35	35
			-8	8	27,300	36.1	40	46	40	50
			-10	10	34,100	44.5	49	56	50	60
HIGH STATIC MODELS (special order)										
24HXB	800	24,000	-5	5	17,000	22.8	25	30	25	30
			-6	6	20,500	27.0	29	35	30	35
			-8	8	27,300	35.3	39	47	40	50
			-10	10	34,100	43.6	48	55	50	60
30HXB	1000	30,000	-5	5	17,000	23.2	26	30	30	30
			-6	6	20,500	27.5	30	35	30	35
			-8	8	27,300	35.8	39	47	40	50
			-10	10	34,100	44.1	48	56	50	60

PHYSICAL DIMENSIONS				
MODEL	A	B	C	D
18HX 19HX 24HX 24HXB	37-1/4	34-11/16	30	6-1/2
25HX 30HX 30HXB	43-1/4	40-11/16	36	6-1/2
31, 36HX	49-1/4	46-11/16	42	6-1/2
37HX	56-1/4	53-11/16	49	6-1/2

BLOWER DATA								
UNIT MODEL	MOTOR HP (240V)	CFM vs. EXTERNAL STATIC PRESSURE						
		0.00	0.05	0.10	0.15	0.20	0.25	0.30
18HX	1/8	840	805	770	735	700	665	630
19HX	1/8	850	820	790	755	720	685	650
24HX	1/4	910	875	840	805	770	730	690
25HX	1/4	930	895	860	825	790	750	710
24HXB	1/4	---	---	---	920	890	860	830
30, 31HX	1/4	1140	1110	1080	1035	990	945	900
30HXB	1/3	---	---	---	1110	1070	1030	990
36HX	1/3	1410	1370	1330	1290	1250	1210	1170
37HX	1/3	1460	1420	1380	1340	1300	1250	1200

- (1) B models NOT recommended for free air delivery.
- (2) Add .05 static when enclosure is used.

EXPANSION VALVE KITS (Heat pump or cooling only)		
PART NO.	TYPE	FOR
9EVR22-2	R22	18 - 37HX (1-1/2 - 3 TON)
9EVR410-1	R410A	18 - 37HX (1-1/2 - 3 TON)

### NOTES:

1. Above expansion valve kits are approved for both cooling only (non heat pump) or heat pump applications.
2. Valves are external equalizing, internal bleed.
3. Valves have screw-on connections.
4. Field installed.

HEAT PUMP KIT (FIELD INSTALLED)	
PART NO.	DESCRIPTION
942-1	KIT FOR HX MODELS WITH ELECTRIC HEAT

**Note:** Heat pump kit must be field installed for all HX models with electric heat. 0 kW models do not require kit. **Contact the factory for compatibility match with condensing unit.**

In keeping with its policy of continuous progress and product improvement, First Co. reserves the right to make changes without notice. Maintenance for all First Co. products is available under "Product Maintenance" at [www.firstco.com](http://www.firstco.com).